



## Internal Quality Assurance Cell

### Student Satisfaction Survey on Teaching Learning Process (2020-21)

1. How much of the syllabus was covered in the class?

4 - 85 to 100%	3 - 70 to 84%	2 - 55 to 69%	1 - 30 to 54%	0 - Below 30%
----------------	---------------	---------------	---------------	---------------

2. How well did the teachers prepare for the classes?

4 - Thoroughly	3 - Satisfactorily	2 - Poorly	1 - Indifferently	0 - Won't teach at all
----------------	--------------------	------------	-------------------	------------------------

3. How well were the teachers able to communicate?

4 - Always effective	3 - Sometimes effective	2 - Just satisfactorily	1 - Generally ineffective	0 - Very poor communication
----------------------	-------------------------	-------------------------	---------------------------	-----------------------------

4. The teacher's approach to teaching can best be described as

4 - Excellent	3 - Very good	2 - Good	1 - Fair	0 - Poor
---------------	---------------	----------	----------	----------

5. Fairness of the internal evaluation process by the teachers.

4 - Always fair	3 - Usually fair	2 - Sometimes unfair	1 - Usually unfair	0 - Unfair
-----------------	------------------	----------------------	--------------------	------------

6. Was your performance in assignments discussed with you?

4 - Every time	3 - Usually	2 - Occasionally/Sometimes	1 - Rarely	0 - Never
----------------	-------------	----------------------------	------------	-----------

7. The institute takes active interest in promoting internship, student exchange, field visit opportunities for students.

4 - Regularly	3 - Often	2 - Sometimes	1 - Rarely	0 - Never
---------------	-----------	---------------	------------	-----------

8. The teaching and mentoring process in your institution facilitates you in cognitive, social and emotional growth.

4 - Significantly	3 - Very well	2 - Moderately	1 - Marginally	0 - Not at all
-------------------	---------------	----------------	----------------	----------------

9. The institution provides multiple opportunities to learn and grow.

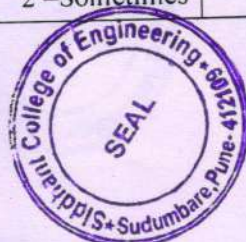
4 - Strongly agree	3 - Agree	2 - Neutral	1 - Disagree	0 - Strongly disagree
--------------------	-----------	-------------	--------------	-----------------------

10. Teachers inform you about your expected competencies, course outcomes and program outcomes.

4 - Every time	3 - Usually	2 - Occasionally/Sometimes	1 - Rarely	0 - Never
----------------	-------------	----------------------------	------------	-----------

11. Your mentor does a necessary follow-up with an assigned task to you.

4 - Every time	3 - Usually	2 - Sometimes	1 - Rarely	0 - I don't have a mentor
----------------	-------------	---------------	------------	---------------------------





### Internal Quality Assurance Cell

#### Student Satisfaction Survey on Teaching Learning Process (2020-21)

12. The teachers illustrate the concepts through examples and applications.

4 – Every time	3 – Usually	2 – Occasionally/Sometimes	1 – Rarely	0 – Never
----------------	-------------	----------------------------	------------	-----------

13. The teachers identify your strengths and encourage you with providing right level of challenges.

4 – Fully	3 – Reasonably	2 – Partially	1 – Slightly	0 – Unable to
-----------	----------------	---------------	--------------	---------------

14. Teachers are able to identify your weaknesses and help you to overcome them.

4 – Every time	3 – Usually	2 – Occasionally/Sometimes	1 – Rarely	0 – Never
----------------	-------------	----------------------------	------------	-----------

15. The institution makes effort to engage students in the monitoring, review and continuous quality improvement of the teaching learning process.

4 – Strongly agree	3 – Agree	2 – Neutral	1 – Disagree	0 – Strongly disagree
--------------------	-----------	-------------	--------------	-----------------------

16. The institute/ teachers use student centric methods, such as experiential learning, participative learning and problem-solving methodologies for enhancing learning experiences.

4 – To a great extent	3 – Moderate	2 – Some what	1 – Very little	0 – Not at all
-----------------------	--------------	---------------	-----------------	----------------

17. Teachers encourage you to participate in extracurricular activities.

4 – Strongly agree	3 – Agree	2 – Neutral	1 – Disagree	0 – Strongly disagree
--------------------	-----------	-------------	--------------	-----------------------

18. Efforts are made by the institute/ teachers to inculcate soft skills, life skills and employability skills to make you ready for the world of work.

4 – To a great extent	3 – Moderate	2 – Some what	1 – Very little	0 – Not at all
-----------------------	--------------	---------------	-----------------	----------------

19. What percentage of teachers use ICT tools such as LCD projector, Multimedia, etc. while teaching.

4 – Above 90%	3 – 70 – 89%	2 – 50 – 69%	1 – 30 – 49%	0 – Below 29%
---------------	--------------	--------------	--------------	---------------

20. The overall quality of teaching-learning process in your institute is very good.

4 – Strongly agree	3 – Agree	2 – Neutral	1 – Disagree	0 – Strongly disagree
--------------------	-----------	-------------	--------------	-----------------------

21. Give three observation / suggestions to improve the overall teaching – learning experience in your institution.

a)

b)



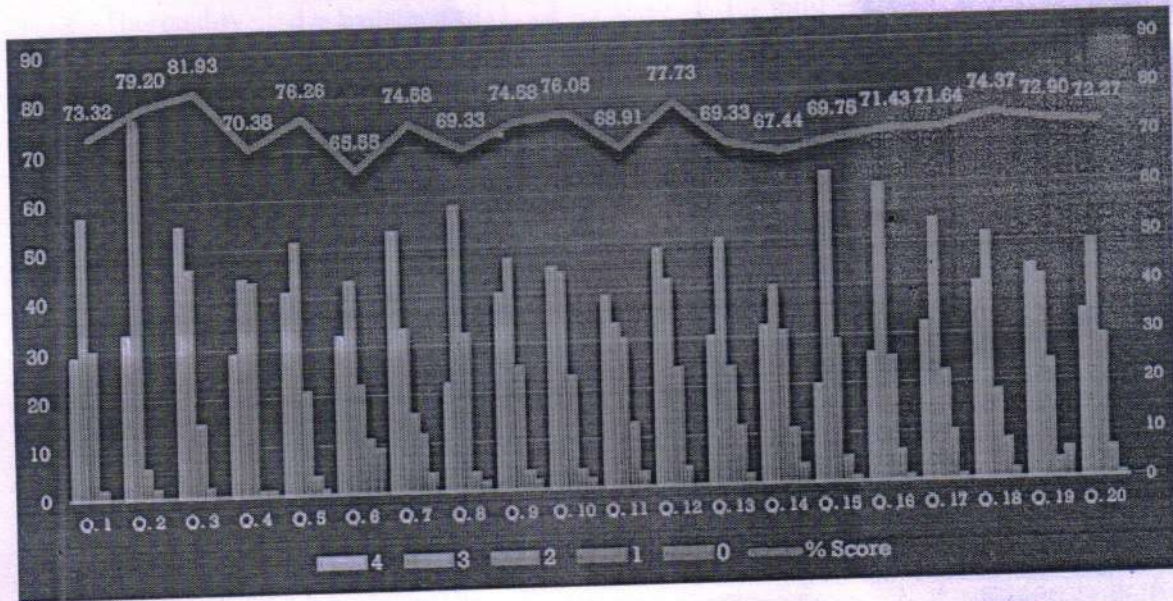


## Internal Quality Assurance Cell Student Satisfaction Survey on Teaching Learning Process (2020-21)

### Result Analysis

#### a) Overall performance of the Institute:

SCOE (69.33%)



#### b) General remarks:

- Theory and practical can be conducted simultaneously with online lecture so that it is easy to understand real life applications.
- More practice of solving MCQs with discussion should be there.
- Video lectures should be recorded.
- Group discussion study needs to be conducted.
- Practical experience should be increased through hands on sessions & virtual labs.
- Project based assignments should be given to understand real life applications.
- Previous paper should be discussed in the PSS session.
- Guest lecture should be more in number.

#### c) Action Taken:

Based on the suggestions given by students, Department wise performance analysis was presented to the HoDs in order to find out the reason/s in case of less feedback percentage and initiate necessary corrective actions from Semester 1 of Academic Year 2021-22.



Prof. U.V. Shinde  
I/C Principal  
Principal  
Siddhant College of Engineering  
Sudumbare, Pune - 412 109