



## Internal Quality Assurance Cell

### Student Satisfaction Survey on Teaching Learning Process (2017-18)

1. How much of the syllabus was covered in the class?

4 - 85 to 100%	3 - 70 to 84%	2 - 55 to 69%	1 - 30 to 54%	0 - Below 30%
----------------	---------------	---------------	---------------	---------------

2. How well did the teachers prepare for the classes?

4 - Thoroughly	3 - Satisfactorily	2 - Poorly	1 - Indifferently	0 - Won't teach at all
----------------	--------------------	------------	-------------------	------------------------

3. How well were the teachers able to communicate?

4 - Always effective	3 - Sometimes effective	2 - Just satisfactorily	1 - Generally ineffective	0 - Very poor communication
----------------------	-------------------------	-------------------------	---------------------------	-----------------------------

4. The teacher's approach to teaching can best be described as

4 - Excellent	3 - Very good	2 - Good	1 - Fair	0 - Poor
---------------	---------------	----------	----------	----------

5. Fairness of the internal evaluation process by the teachers.

4 - Always fair	3 - Usually fair	2 - Sometimes unfair	1 - Usually unfair	0 - Unfair
-----------------	------------------	----------------------	--------------------	------------

6. Was your performance in assignments discussed with you?

4 - Every time	3 - Usually	2 - Occasionally/Sometimes	1 - Rarely	0 - Never
----------------	-------------	----------------------------	------------	-----------

7. The institute takes active interest in promoting internship, student exchange, field visit opportunities for students.

4 - Regularly	3 - Often	2 - Sometimes	1 - Rarely	0 - Never
---------------	-----------	---------------	------------	-----------

8. The teaching and mentoring process in your institution facilitates you in cognitive, social and emotional growth.

4 - Significantly	3 - Very well	2 - Moderately	1 - Marginally	0 - Not at all
-------------------	---------------	----------------	----------------	----------------

9. The institution provides multiple opportunities to learn and grow.

4 - Strongly agree	3 - Agree	2 - Neutral	1 - Disagree	0 - Strongly disagree
--------------------	-----------	-------------	--------------	-----------------------

10. Teachers inform you about your expected competencies, course outcomes and program outcomes.

4 - Every time	3 - Usually	2 - Occasionally/Sometimes	1 - Rarely	0 - Never
----------------	-------------	----------------------------	------------	-----------

11. Your mentor does a necessary follow-up with an assigned task to you.

4 - Every time	3 - Usually	2 - Sometimes	1 - Rarely	0 - I don't have a mentor
----------------	-------------	---------------	------------	---------------------------





## Internal Quality Assurance Cell Student Satisfaction Survey on Teaching Learning Process (2017-18)

12. The teachers illustrate the concepts through examples and applications.

4 - Every time	3 - Usually	2 - Occasionally/Sometimes	1 - Rarely	0 - Never
----------------	-------------	----------------------------	------------	-----------

13. The teachers identify your strengths and encourage you with providing right level of challenges.

4 - Fully	3 - Reasonably	2 - Partially	1 - Slightly	0 - Unable to
-----------	----------------	---------------	--------------	---------------

14. Teachers are able to identify your weaknesses and help you to overcome them.

4 - Every time	3 - Usually	2 - Occasionally/Sometimes	1 - Rarely	0 - Never
----------------	-------------	----------------------------	------------	-----------

15. The institution makes effort to engage students in the monitoring, review and continuous quality improvement of the teaching learning process.

4 - Strongly agree	3 - Agree	2 - Neutral	1 - Disagree	0 - Strongly disagree
--------------------	-----------	-------------	--------------	-----------------------

16. The institute/ teachers use student centric methods, such as experiential learning, participative learning and problem-solving methodologies for enhancing learning experiences.

4 - To a great extent	3 - Moderate	2 - Some what	1 - Very little	0 - Not at all
-----------------------	--------------	---------------	-----------------	----------------

17. Teachers encourage you to participate in extracurricular activities.

4 - Strongly agree	3 - Agree	2 - Neutral	1 - Disagree	0 - Strongly disagree
--------------------	-----------	-------------	--------------	-----------------------

18. Efforts are made by the institute/ teachers to inculcate soft skills, life skills and employability skills to make you ready for the world of work.

4 - To a great extent	3 - Moderate	2 - Some what	1 - Very little	0 - Not at all
-----------------------	--------------	---------------	-----------------	----------------

19. What percentage of teachers use ICT tools such as LCD projector, Multimedia, etc. while teaching.

4 - Above 90%	3 - 70 - 89%	2 - 50 - 69%	1 - 30 - 49%	0 - Below 29%
---------------	--------------	--------------	--------------	---------------

20. The overall quality of teaching-learning process in your institute is very good.

4 - Strongly agree	3 - Agree	2 - Neutral	1 - Disagree	0 - Strongly disagree
--------------------	-----------	-------------	--------------	-----------------------

21. Give three observation / suggestions to improve the overall teaching - learning experience in your institution.

a)

b)



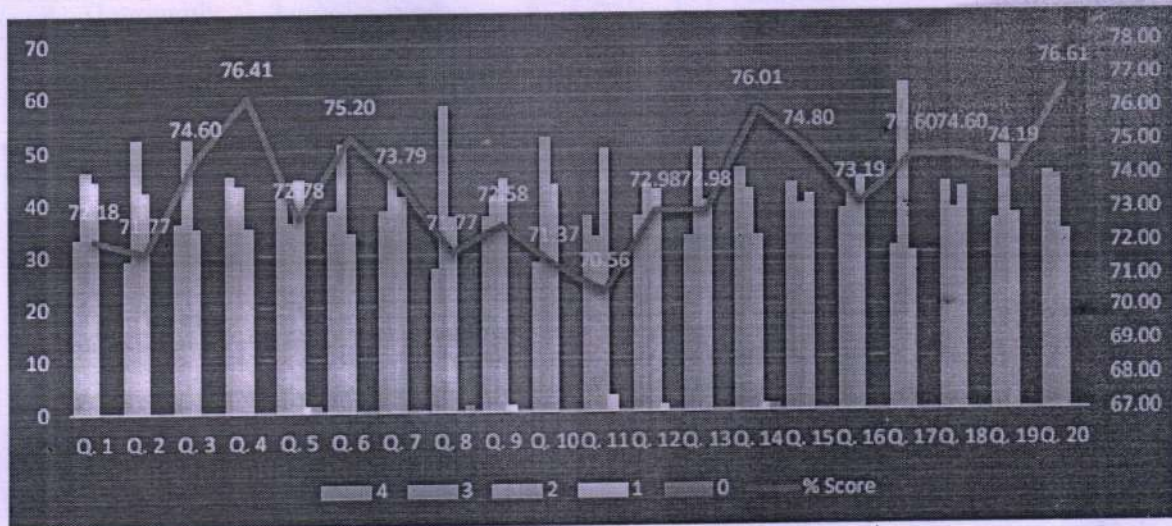


## Internal Quality Assurance Cell Student Satisfaction Survey on Teaching Learning Process (2017-18)

### Result Analysis

#### a) Overall performance of the Institute:

SCOE (73.65%)




#### b) General remarks:

- Institute should provide College Bus facility from all over the Pune & PCMC area for students during SPPU End Sem examination at morning & evening slot.
- Sample question papers of Insem should be prepared by all subject teachers for reference purpose.
- Water cooler with purifier should be installed at each floor of institute.

#### c) Action Taken:

Based on the suggestions given by students, Department wise performance analysis was presented to the HoDs in order to find out the reason/s in case of less feedback percentage and initiate necessary corrective actions from Semester 1 of Academic Year 2018-19.



  
Dr. D.R. Somasekar  
Principal  
Siddhant College of Engineering  
Sudumbare, Pune - 412 109